

# FIBARO®

Home intelligence



## PRODUCT CATALOGUE FIBARO SYSTEM



CUSTOM  
ELECTRONIC  
DESIGN &  
INSTALLATION  
ASSOCIATION

Member

# About Fibaro

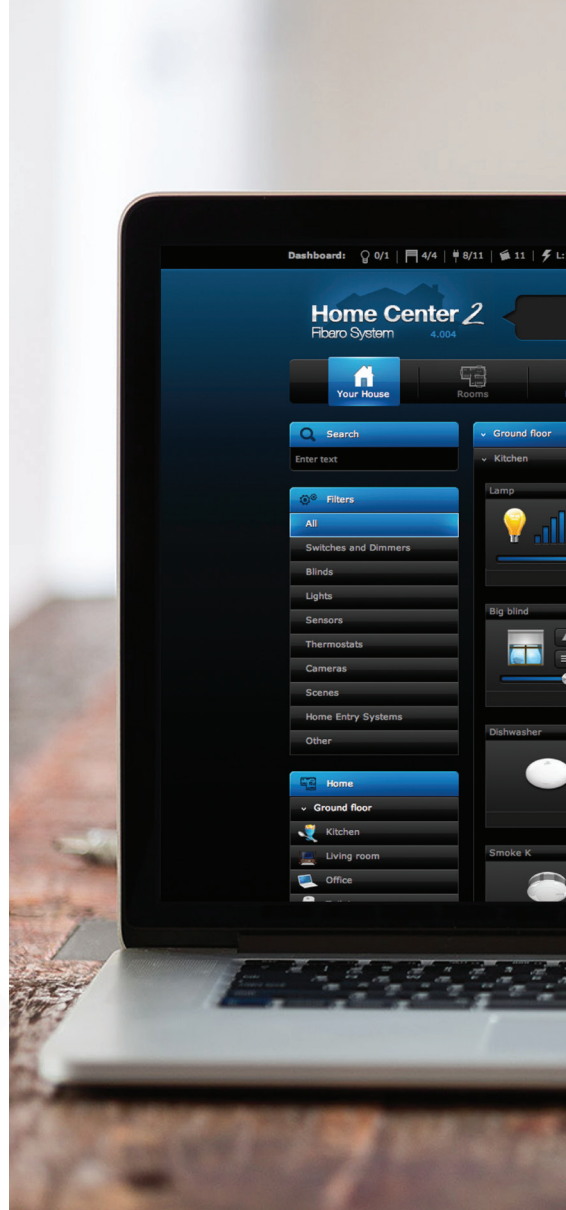
---

Fibaro is probably the most advanced building automation solution in the world today.

Fibaro is fundamentally different. Where other home automation systems focus on the control of AV equipment, Fibaro is a complete solution for the monitoring, management and intelligent automation of living and working environments.

Fibaro's system of sensors and modules allows your home or office to intelligently respond to the changing environment, effortlessly optimising your comfort, safety and energy efficiency.

Fibaro uses Z-Wave wireless technology and a revolutionary new non-invasive installation procedure to completely eliminate the need to run new cables.

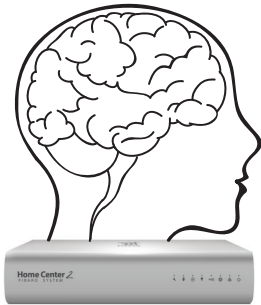


# The System

---

1

## The System Processor



### Home Centre 2

The processor is the brain of the system. It handles all of the user interaction, logic processing and decision making required to manage and automate your home

2 Sensors



Sensors monitor temperature, humidity, light, motion and a host of other parameters and report them back to the system processor in real time

3

## Modules

Modules control and interact with devices in your home



### Dimmer

Vary the brightness of lights in your home, saving power and creating beautiful lighting scenes



### Roller Shutter

Control motorised blinds, curtains, shutters and awnings to make the most of natural light



### Relay Switch

Switch any electrical device on and off, either at will or in response to information from sensors



### RGBW Controller

Control LED strip lighting, fine-tune colour and brightness to your taste or create scenes that can be recalled at the touch of a button



### Wall Plug

Monitors the power draw of electrical appliances and allows them to be remotely switched on and off

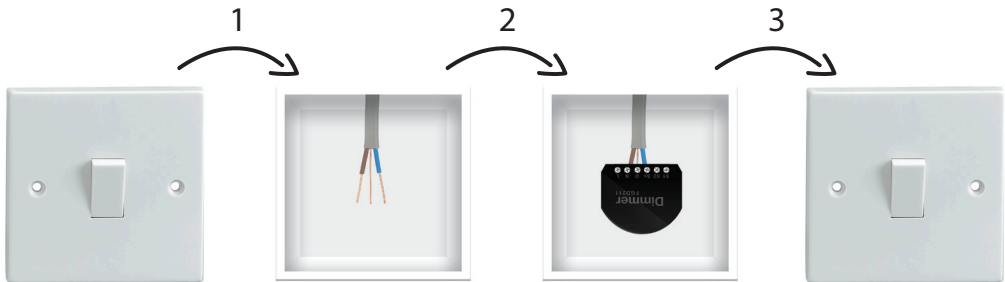
# Modules

## 3 Minute Installation

---

Installation of our wired modules is quick and simple...

- ✓ Remove the light switch
- ✓ Disconnect the cables
- ✓ Connect the Fibaro system module
- ✓ Reconnect the switch to the Fibaro system module
- ✓ Screw the switch back onto the wall



# Sensors

## 1 Minute Installation

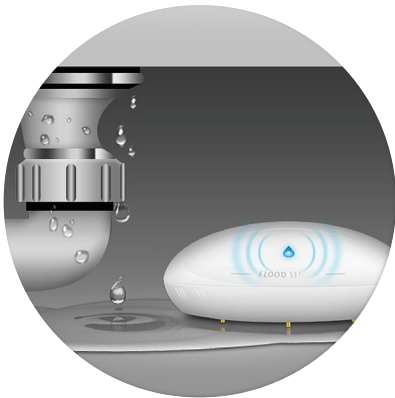
---

...but not as quick as installing Fibaro sensors

Our battery powered, Z-wave sensors require no wires at all - you just go ahead and put them where you want them. They can be attached with a single screw or self-adhesive strip, or even just placed on a flat surface.

With a battery life of up to five years\*, sensors can be placed in remote locations without mains power. Fibaro will notify you when the battery is running low and needs to be changed.

\*Depending on settings & usage



# Save Energy

---

All of the devices in the Fibaro System have been designed with saving energy in mind. Whether it's the system components themselves or the devices they're connected to, the aim is to ensure that as little energy is wasted as possible. The radio transmitters in the battery operated devices have been fine tuned to only operate when necessary. This fine tuning means batteries only need to be replaced every 2-5 years\*

\*Depending on usage

All Fibaro products comply with the EU RoHS (Restriction of Hazardous Substances) and WEEE (Waste of Electrical and Electronic Equipment) directives, meaning parts can be reclaimed and recycled instead of disposed of in landfill. The system is designed to be compatible with the latest green lighting technologies including compact fluorescent and LED lamps. Fibaro can help developers to meet environmental legislation such as EN 15232 and the Energy Performance of Buildings Directive.

With Fibaro,  
Users can save up to 30% on their electricity bills  
and up to 23% on heating\*

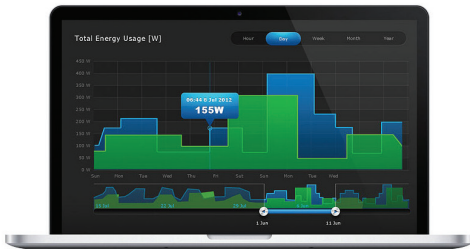


# Save Money

---

Fibaro allows you to measure the power draw of any device in real time, view historical graphs and charts of the energy consumption of your home, identify inefficient and wasteful devices and regulate their activities. The system can automatically disable selected devices every time you leave the building to save power.

Fibaro's intelligent architecture lets you mitigate situations that result in unnecessary waste. By setting up logical relationships between sensor feedback and system actions, Fibaro can help appliances to work in harmony. If a window is left open on a cold day, Fibaro could exclude that room from your heating programme or activate a relay to close it. Fibaro can ensure that your heating and air conditioning don't compete with each other, or even allow parents to regulate the amount of time their children watch TV. The system can warn you when a device breaks down, or disable electronics in the case of a flood - preventing damage to your home and extending the life of your appliances.





## User friendly, Intuitive Interface

---

The Fibaro App runs on nearly any mobile device including iPhone, iPad and popular Android phones. Control and monitor any device in your network from whichever phone or tablet makes you feel at home.

Unlike competing systems, there's no need to program and deploy your own interface. Everything is generated for you automatically within the App. Devices, rooms and scenes are pulled automatically from the system and organised on the screen with no further effort required. The interface is fluid and elegant right out of the box, and you can customise it further with a range of different in-built icons and support for importing your own



Fibaro also has a web-based control and configuration interface that can be accessed from any web browser on a PC or Mac, anywhere in the world. Gone away on holiday and forgot to set the alarm? No problem. Log in from the beach and activate it remotely.



**The Web-based Interface**

There's no specialist software to install or licenses to purchase. You can access the interface on your existing web browser from anywhere with an internet connection and enjoy all of the same features you would if you were sitting in your home, without the need for complicated VPNs or Static IP Addresses. .



**The Mobile App**

# Home Center 2

---

The Home Center 2 is the brain of the Fibaro system. The Home Centre 2 handles all of the logic and decision-making needed to manage and automate your home. This powerful processor can communicate with up to 230 devices simultaneously using a wireless protocol called Z-Wave. The Home Centre 2 updates itself, manages itself and features an automatic back-up system that will protect your data in the unlikely event of a failure. Using the intuitive configuration interface you can schedule automatic actions, manage dependencies between devices in your home and incorporate new Fibaro products at the touch of a button. Advanced users can explore writing custom scripts in Lua for near-limitless possibilities.



## controls:

---



lights



blinds



temperature



media



cameras



alarm



equipment

---



HC2 CEDIA Best New Product Finalist

NEW

# Home Center Lite

The Home Center Lite draws on the success of the Home Centre 2 to provide powerful processing in a compact package. This DIN-rail mountable processor provides fantastic functionality right out of the box and can be expanded further with the addition of extra modules and plug-ins\*. The perfect solution for simple control and automation.



\*coming soon





# Dimmer

---

Vary the brightness of light sources in your home to create beautiful lighting effects and conserve energy. The Fibaro Dimmer is designed to be compatible with green lighting technologies such as LED and compact fluorescent lamps, and can be easily installed behind light switches and other fixtures. Fibaro allows you to create scenes that can be recalled at the touch of a button or scheduled to take place under certain conditions - such as gently lighting the way to the bathroom at night, or illuminating your driveway as you arrive home.



## controls:

---



lights



fan



outdoor lamps



lamp



wall lights

---

# Relay Switch

---

The Relay Switch can be used to switch electronic devices on and off, either at will or in response to stimuli. Fibaro can use relays to turn your boiler on before you wake, ready for your morning shower, or to activate your ventilation system in response to rising humidity. Relay Switches allow the incorporation of a wide variety of electrical equipment into the Fibaro system. This model can switch a single device of up to 3Kw load.



## Double Relay Switch

---

The Double Relay Switch functions much as the Relay Switch, but offers extra diversity by providing switching for two separate loads of up to 1.5Kw from a single compact module.



### controls:

---



radio



kettle



toaster



iron



intercom

---



# RGBW Controller

Control LED, RGB, RGBW strips and low voltage halogen lights to create beautiful, immersive lighting scenes. Fine-tune colour and brightness from the App or create preset scenes that can be called up at the touch of a button. The device provides support for up to four additional analogue sensors such as temperature sensors, humidity sensors, wind sensors, air quality sensors and light meters.



## functionality:



RGBW



Analogue sensors



Four output channels

# Roller Shutter 2

Incorporate motorised blinds, curtains, awnings and windows into your Fibaro system and make the best use of natural light. The Fibaro Roller Shutter 2 allows precise control and positioning of motorised window treatments and other features such as garage doors.

controls:



*awnings*



*blinds*



*curtains*

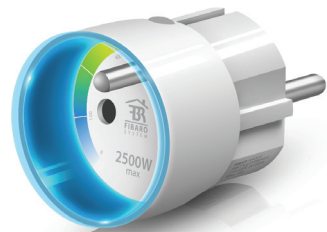
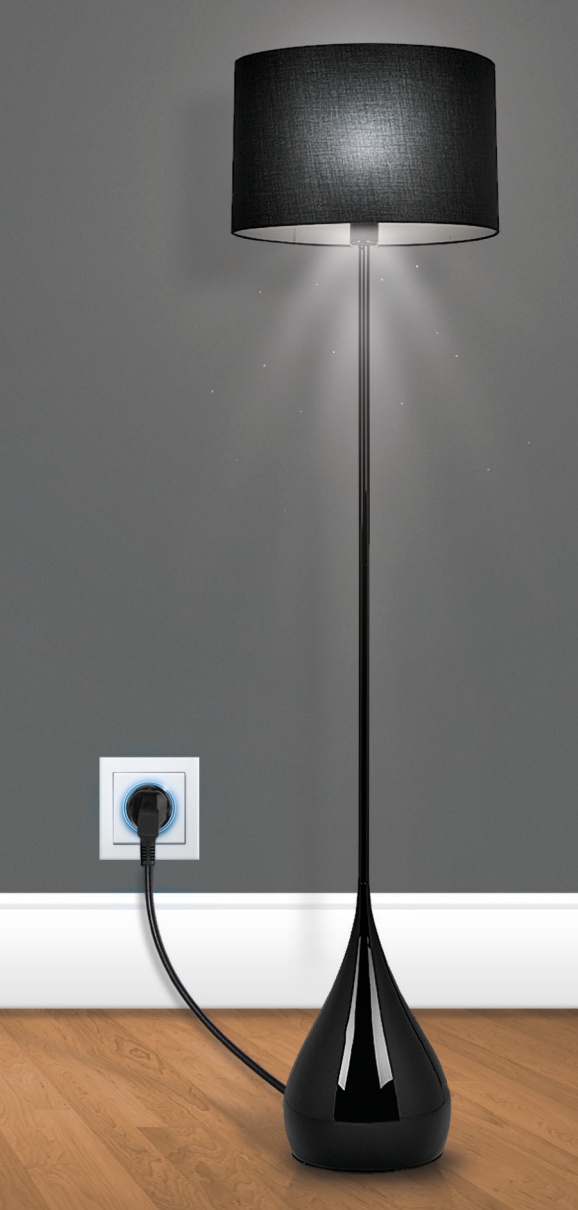


*garage door*



*roof windows*





## Wall Plug

---

Beautifully simple. The Fibaro Wall Plug requires no specialist tools or knowledge – just take it out of the box, plug it in to a mains socket and connect any electrical device. The Wall Plug will measure the power draw of the device in real-time. View graphs and charts of the energy consumption of your home or business and identify inefficient and wasteful devices. Receive email notifications if an appliance breaks down, or remotely disable devices when you leave the building to save power.

### controls:

---



*projector*



*coffee*



*television*



*iron*



*lights*

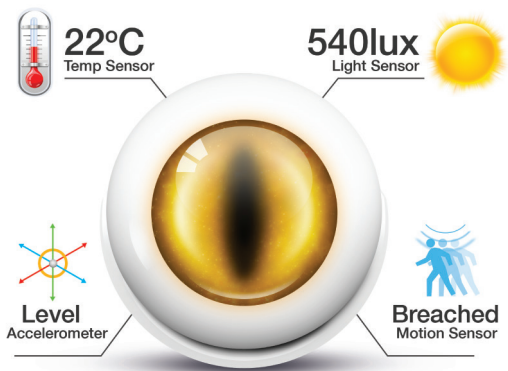


Editors Technology Award  
CeBIT 2013

NEW

# Motion Sensor

With the ability to detect minute movements, meter light intensity and detect if the device itself is moved, the striking new Motion Sensor from Fibaro opens up a wealth of intelligent automation options. By reading light levels in a room, Fibaro can adjust your lighting as natural illumination levels change and ensure optimum comfort and energy efficiency. If there's no motion in a room and Fibaro detects that an iron has been left on, the system can switch it off and prevent a fire. The Motion Sensor features an internal accelerometer that can raise the alarm if the device is tampered with.

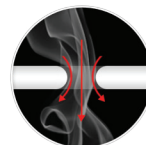




# Smoke Sensor

---

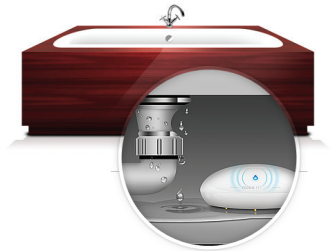
The Smoke Sensor is a high-tech fire alarm with both photoelectric and temperature sensors for maximum protection from flaming and smoldering fires. The device features an integral 100dbm siren and an RGB visual indicator for an instant alert, but also feeds back data to the Fibaro system processor - allowing it to take further actions such as closing windows to starve the fire of oxygen and illuminating the escape routes. The Smoke Sensor has a built-in Z-Wave range tester and incorporates an electronic recording device for the purposes of investigating the cause of a fire.





## Flood Sensor

Beneath the elegant white exterior, the Flood Sensor is equipped with three ultra-sensitive 24-karat gold telescopic probes that allow the sensor to precisely measure moisture and temperature levels. Using this feedback Fibaro can detect floods and take action to isolate electrical appliances and shut off water supplies to limit damage, or even detect ice formation in a driveway and send push notifications to warn the homeowner. Thanks to advanced Z-Wave technology and a battery-operated lifespan of up to five years the water-resistant sensor can operate wirelessly from remote locations for years at a time without maintenance.





# Door / Window Sensor

---

The Door / Window Sensor is a battery powered reed sensor that expands the capabilities of the system by monitoring the state of doors, windows, garages and other apertures. The sensor can be used to automatically turn a light on when you enter a room, guard against unauthorised access, warn you if you leave your front door open when you leave the house or even reduce your heating bills by excluding zones with open windows from the heating programme. The Door/Window sensor includes support for an optional temperature sensor.



---

## senses:



*doors*



*windows*



*skylights*



*garage doors*



*gates*

---

## available in 7 different colours:





# Universal Sensor

The Universal Binary Sensor is a wireless module that allows you to bridge the output of any binary sensor onto the Z-Wave network and incorporate it into your Fibaro system. The module supports up to two binary sensors and four temperature sensors. The Universal Binary Sensor allows advanced users to quickly and easily incorporate alarm systems, infra-red receivers and other third-party devices into a Fibaro Z-Wave network.



## senses and controls:



*motion detector*



*smoke detector*



*infrared detector*



*alarm siren*



## Why Fibaro ?

- User friendly, intuitive interface
- Easy, non-invasive installation
- Improves safety, comfort and energy efficiency
- Designed and manufactured in Europe
- Based on the proven success of Z-Wave

## Contact Us



Fibaro UK  
0203 327 1000  
Office@FibaroUK.co.uk  
www.FibaroUK.co.uk